



## Thriving on Mega Solar Construction Sites Ensuring Safe, Secure, and Efficient Material Handling

In mega solar construction sites, where rough terrain is prevalent, ensuring safe and efficient material handling is paramount. The rubber tracked rough terrain forklift is the optimal choice for this task.



Unlike tire-based forklifts that struggle with traction in soft ground or wheel loaders that become unstable when lifting loads, the MFD-20 rubber tracked forklift provides a stable and safe solution. Additionally, using cranes poses a risk of damaging materials like panels, whereas the rubber tracked forklift ensures gentle handling without risking any harm.

With the rubber tracked forklift MFD-20,  
safe and stable material transportation  
is achievable.

● Specifications are subject to modify without notice

# Dimensions

A	4,030 mm	13'3"
B	1,590 mm	5'3"
C	1,945 mm	6'5"
D	200 mm	8"
E	2,960 mm	9'9"
F	1,240 mm	4'1"
G	350 mm	14"
H	2,250 mm	7'5"

J	2,135 mm	7'
K	3,000 mm	9'10"
L	40 mm	2"
M	1,070 mm	3'6"
N	1,030 mm	3'5"
P	120 mm	5"
Q	6°	
R	12°	



# MOROOKA

## Cargo handling operations on rough terrain Rubber Tracked Rough Terrain Forklift

Maximum Loading Capacity 2,000kg

# MFD-20



## FORKLIFT

### For CARGO HANDLING in SOFT, SANDY and ROUGH TERRAIN

Durable Rubber Tracks : Morooka rubber trucks offer the best of all worlds with low pressure, high performance movement and excellent traction. Simple operation system : Simple & comfortable operation is performed by Morooka original 1 driving lever and simple cockpit. High minimum ground clearance : Easy & safety operation can be done by high minimum ground clearance design

**MOROOKA**  
Morooka Co., Ltd.

URL : [www.morooka.com](http://www.morooka.com) (English) [www.morooka.co.jp](http://www.morooka.co.jp) (Japanese)

Postal Code : 301-0031

358 Shoubeeshindenmachi, Ryugasaki city, Ibaraki Prefecture, Japan

TEL : +81-297-66-2111 TEL : (Overseas Sales Dept.) : +81-297-86-9034



CONTACT



# The rubber tracked forklift MFD-20 excels in various rough terrain sites.

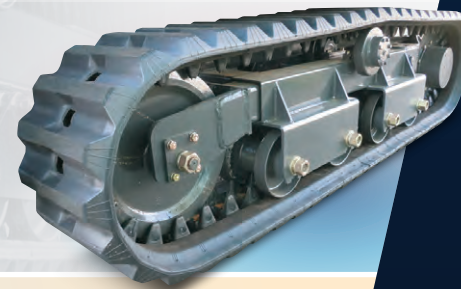
Our HST is fuel-efficient and offers excellent maneuverability, made even easier with Morooka's unique single lever control



## Tradition and Achievement

### Robust undercarriage and high maneuverability

Since successfully developing the world's first large rubber crawler in collaboration with Bridgestone in 1978, we have continued to improve daily and provide the best undercarriage.



### Featuring Kubota's V2403 engine

Adopting a pressure-sensitive seat to limit mast operation when not seated. LED lamps are used for headlights, rail lights, and turn signals to improve visibility in dark areas.



#### Polycarbonate sheet

for ensuring overhead visibility of the canopy ceiling.



#### Simple operation system

inheriting easy and comfortable maneuverability



#### Easy-to-read control panel



#### Seat equipped with pressure sensor

As a safety feature, tilt and lift operations are only possible when seated.



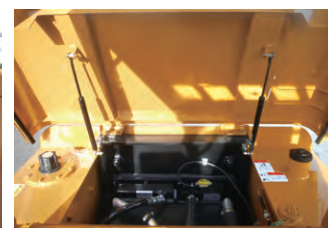
Oil filter and tool storage box



Battery box



Engine & air cleaner



Radiator

