

Pioneer of Rubber Crawler Carriers



MOROOKA

MST-600VD

Crawler Carrier Rigid Series

3,800kg

Payload

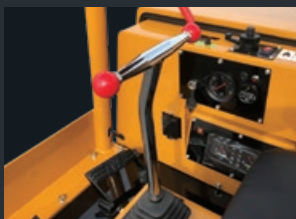


- Comfortable operation with simple travel levers
- Improved Work Efficiency Through High Off-Road Capability
- A robust frame structure and durable crawlers, designed for long-term use

Contributing to Productivity improvement

Effortless Control for Maximum Efficiency

The simple travel lever enables intuitive operation and contributes to achieving highly efficient work.



High Off-Road Capability for Efficient Transport

The durable rubber crawlers provide excellent traction on rough terrain, enabling smooth transport of heavy loads even in challenging environments.



Large Dump Bed for Increased Load Capacity

The spacious dump bed allows for transporting larger volumes of material in a single trip, reducing downtime and improving efficiency.



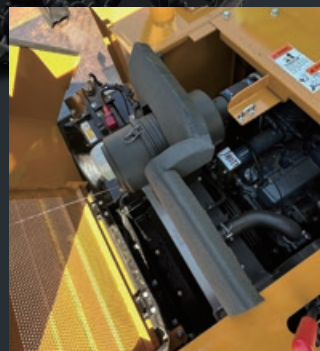
Specifications

MODEL	MST-600VD
PERFORMANCE	
Maximum Payload	3,800 kg
Travel Speed (High/Low)	10 / 7 km/h
Ground Pressure (Empty/Loaded)	24.8 / 46.4 kPa
MACHINE DIMENSION & WEIGHT	
Operating Weight	4,400 kg
Overall Length	3,780 mm
Overall Width (Transportation)	1,950 mm
Overall Height	3,250 mm
Minimum Ground Clearance	350 mm
Crawler Width	500 mm
DUMP BODY	
Dump Shape	Drop side dump bed
Length x Width x Height	2,150 x 1,700 x 360 mm
Dump Capacity (Struck/Heaped)	—
ENGINE	
Name	KUBOTA V3307
Nominal Output	55 kW / 2,200 rpm
FUEL USED	
	Diesel
TANK CAPACITY	
Fuel Tank Capacity	75 ℓ
Hydraulic Oil Tank Capacity	58 ℓ
Emission Standard	Tier 4 Interim / EU Stage IIIA

● Specifications are subject to modify without notice

Durable mechanical KUBOTA engine

Equipped with a durable and easy-to-maintain Kubota engine that requires no urea or DPF, featuring a mechanical system.



Improvement in maintainability

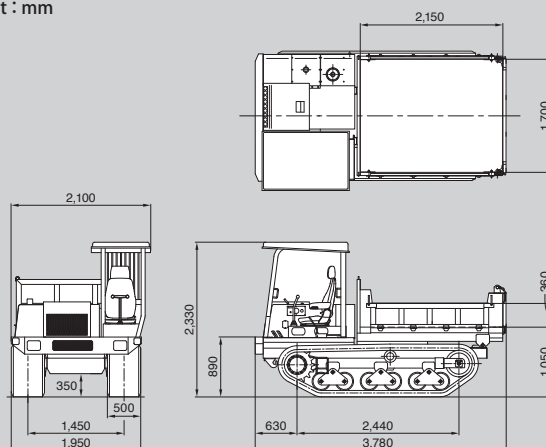
Easy Access to daily inspection and maintenance area

The engine, battery compartment, and fuel ports are strategically positioned for easy access, ensuring superior daily inspections and maintenance efficiency.



Dimensions

Unit : mm



MOROOKA
Morooka Co., Ltd.



URL: www.morooka.com (English) www.morooka.co.jp (Japanese)
Postal Code : 301-0031
358 Shoubeeshindenmachi, Ryugasaki city, Ibaraki Prefecture, Japan
TEL : +81-297-66-2111 TEL : (Overseas Sales Dept.) : +81-297-86-9034

CONTACT