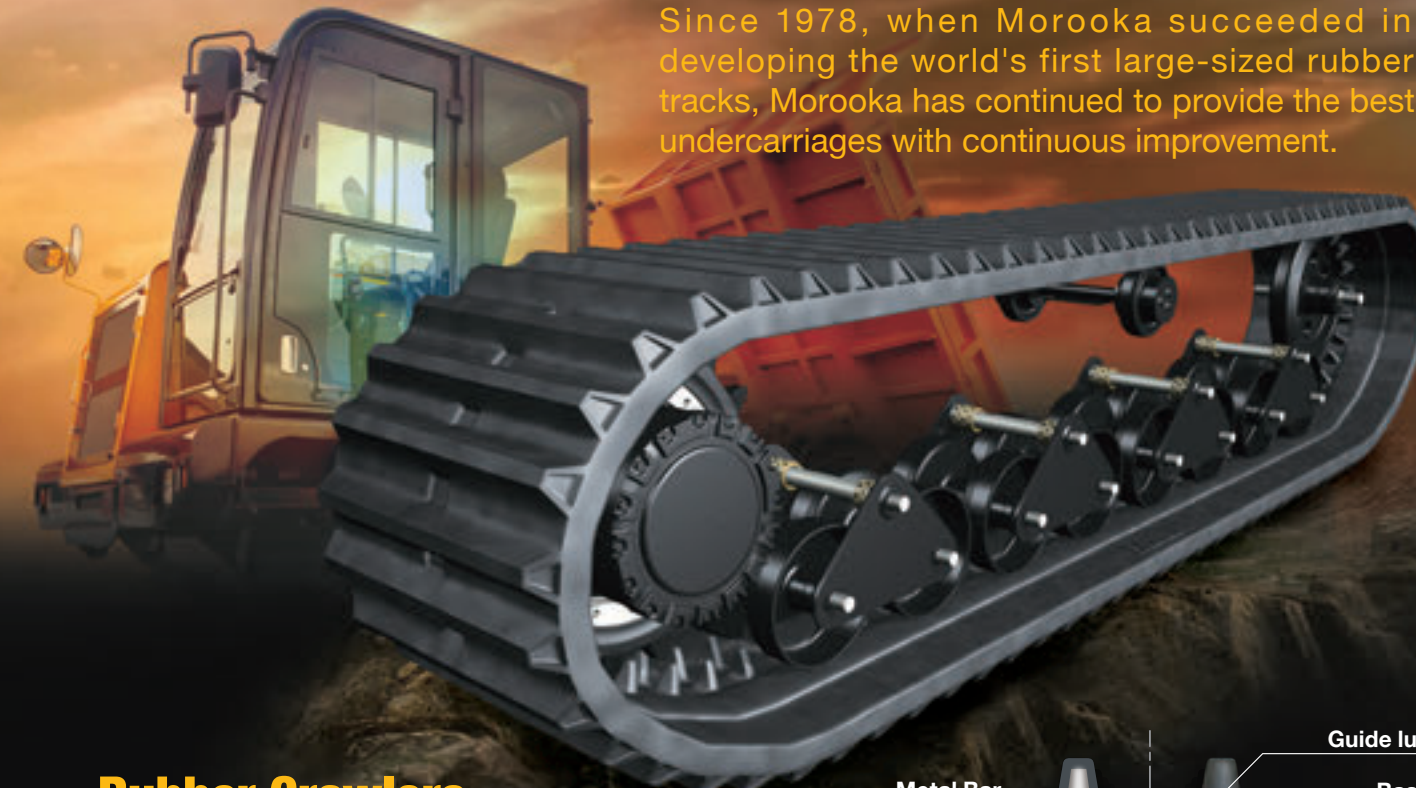




Strong Undercarriage for Excellent Off Road Capability

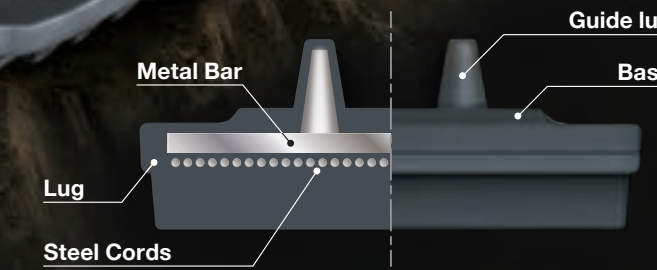
MOROOKA's Large Rubber Tracks

Since 1978, when Morooka succeeded in developing the world's first large-sized rubber tracks, Morooka has continued to provide the best undercarriages with continuous improvement.



Rubber Crawlers

Morooka is the pioneer of rubber tracks! We continue to evolve, pushing the envelope with innovative design, using over 40 years of knowledge and experience as our launching pad. We provide seamless, heavy duty, rubber tracks for long lasting durability!

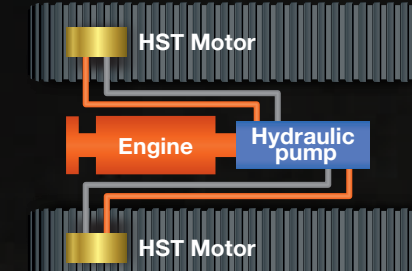


Track Rollers

Our large diameter track rollers efficiently disperse the load on rubber tracks and undercarriages.

HST System

The HST system is a very economical system using engine power to drive the hydraulic pump and motor, enabling operators to experience smooth and stable driving. The system completely eliminates the need for clutch and gear control too.



Postal Code : 301-0031
 358 Shoubeeshindinmachi, Ryugasaki city, Ibaraki Prefecture, Japan
 TEL, +81-297-66-2111 FAX, +81-297-66-3110
 OVERSEAS DEPT, +81-297-86-9034
 URL : www.morooka.co.jp (Japanese)
www.morooka.com (English)



CONTACT

CRAWLER CARRIER



CARRIER for SOFT, SANDY and ROUGH TERRAIN

Durable Rubber Tracks : The rubber tracks offered on our Morooka carriers are the result of over 50 years of joint development from Bridgestone and Morooka. The rubber tracks combine the characteristics of a tire equipped vehicle, such as speed and a smooth ride, while providing the traction of a steel track. Rubber tracks offer the best of all worlds with low ground pressure, high performance movement and excellent traction.

MODEL	MST40CR	MST-1000VDR	MST80CR
PERFORMANCE	Maximum Payload kg (lbs) 4,000 (8,818) Loading Capacity (Struck / Heaped) m ³ (yd ³) 1.48 (1.9) / 1.8 (2.4) Speed (High / Low) kph (mph) 10.8 (6.7) / 7.6 (4.7) Ground Pressure (Empty / Laden) kPa (psi) 25.9 (3.6) / 46.8 (6.8)	Maximum Payload kg (lbs) 5,500 (12,125) Loading Capacity (Struck / Heaped) m ³ (yd ³) 1.86 (2.4) / 2.69 (3.5) Speed (High / Low) kph (mph) 9.6 (6.0) / 7.4 (4.2) Ground Pressure (Empty / Laden) kPa (psi) 26.8 (3.9) / 42.9 (6.2)	Maximum Payload kg (lbs) 8,000 (17,637) Loading Capacity (Struck / Heaped) m ³ (yd ³) 2.43 (3.2) / 4.5 (2) Speed (High / Low) kph (mph) 10.6 (6.6) / 7.4 (4.6) Ground Pressure (Empty / Laden) kPa (psi) 27.9 (4.0) / 46.6 (6.8)
MACHINE DIMENSION & WEIGHT	Machine Weight kg (lbs) 5,100 (11,244) Overall Length mm (ft.in.) 3,900 (12'10") Overall Width for transport mm (ft.in.) 2,100 (7'11") Overall Height mm (ft.in.) 2,615 (8'7") Min. Ground Clearance mm (ft.in.) 455 (1'6") Crawler Width mm (ft.in.) 600 (24")	Machine Weight kg (lbs) 9,140 (20,150) Overall Length mm (ft.in.) 4,870 (16'4") Overall Width for transport mm (ft.in.) 2,400 (7'11") Overall Height mm (ft.in.) 3,100 (10'3") Min. Ground Clearance mm (ft.in.) 516 (1'9") Crawler Width mm (ft.in.) 700 (28")	Machine Weight kg (lbs) 11,950 (26,345) Overall Length mm (ft.in.) 4,870 (16'4") Overall Width for transport mm (ft.in.) 2,665 (8'9") Overall Height mm (ft.in.) 3,100 (10'3") Min. Ground Clearance mm (ft.in.) 560 (1'11") Crawler Width mm (ft.in.) 700 (28")
DUMP BED (INNER)	Overall Length mm (ft.in.) 2,000 (6'7") Overall Width mm (ft.in.) 1,900 (6'3") Overall Height mm (ft.in.) 370 (1'3")	Overall Length mm (ft.in.) 2,300 (7'7") Overall Width mm (ft.in.) 2,100 (6'11") Overall Height mm (ft.in.) 450 (1'6")	Overall Length mm (ft.in.) 2,400 (7'11") Overall Width mm (ft.in.) 2,350 (7'9") Overall Height mm (ft.in.) 545 (1'10")
ENGINE	Name KUBOTA V3307-CR-T-YDN Nominal Output kW(HP)/rpm 93 (125.9) / 2,200 Fuel Capacity ℓ (gal) 140 (37) Hydraulic Oil Tank Capacity ℓ (gal) 54 (14.3) DEF Tank Capacity ℓ (gal) 19 (5)	Name KUBOTA V5009 Nominal Output kW(HP)/rpm 151.9 (206.5) / 2,200 Fuel Capacity ℓ (gal) 210 (55.5) Hydraulic Oil Tank Capacity ℓ (gal) 106 (28) DEF Tank Capacity ℓ (gal) 40 (10.6)	Name KUBOTA V5009 Nominal Output kW(HP)/rpm 151.9 (206.5) / 2,200 Fuel Capacity ℓ (gal) 210 (55.5) Hydraulic Oil Tank Capacity ℓ (gal) 106 (28) DEF Tank Capacity ℓ (gal) 40 (10.6)
EMISSION STANDARD	Tier4 Final EU Stage V	Tier4 Final EU Stage IV	Tier4 Final EU Stage V

MODEL	MST110CR	MST-3000VDR	MST200CR
PERFORMANCE	Maximum Payload kg (lbs) 11,000 (24,251) Loading Capacity (Struck / Heaped) m ³ (yd ³) 4.36 (5.7) / 6.17 (8.1) Speed (High / Low) kph (mph) 11.8 (7.3) / 7.6 (4.7) Ground Pressure (Empty / Laden) kPa (psi) 35.4 (5.1) / 59.7 (8.7)	Maximum Payload kg (lbs) 15,000 (33,069) Loading Capacity (Struck / Heaped) m ³ (yd ³) 5.4 (7.1) / 7.61 (10) Speed (High / Low) kph (mph) 12.07 (7.5) / 8.05 (5.5) Ground Pressure (Empty / Laden) kPa (psi) 36.7 (5.3) / 59.5 (10.1)	Maximum Payload kg (lbs) 20,000 (44,092) Loading Capacity (Struck / Heaped) m ³ (yd ³) 7.8 (10.2) / 10.25 (13.4) Speed (High / Low) kph (mph) 11.2 (7.1) / 7.3 (4.5) Ground Pressure (Empty / Laden) kPa (psi) 45 (6.3) / 61.4 (11.8)
MACHINE DIMENSION & WEIGHT	Machine Weight kg (lbs) 16,000 (35,274) Overall Length mm (ft.in.) 6,000 (19'9") Overall Width for transport mm (ft.in.) 2,980 (9'10") Overall Height mm (ft.in.) 3,280 (10'9") Min. Ground Clearance mm (ft.in.) 570 (1'11") Crawler Width mm (ft.in.) 800 (32")	Machine Weight kg (lbs) 24,740 (54,542) Overall Length mm (ft.in.) 6,070 (19'11") Overall Width for transport mm (ft.in.) 2,985 (9'10") Overall Height mm (ft.in.) 3,275 (10'9") Min. Ground Clearance mm (ft.in.) 565 (1'11") Crawler Width mm (ft.in.) 850 (34")	Machine Weight kg (lbs) 27,400 (60,380) Overall Length mm (ft.in.) 6,800 (22'4") Overall Width for transport mm (ft.in.) 3,200 (10'6") Overall Height mm (ft.in.) 3,400 (11'2") Min. Ground Clearance mm (ft.in.) 620 (2'1") Crawler Width mm (ft.in.) 850 (34")
DUMP BED (INNER)	Overall Length mm (ft.in.) 3,050 (10'1") Overall Width mm (ft.in.) 2,750 (9'1") Overall Height mm (ft.in.) 635 (2'1")	Overall Length mm (ft.in.) 3,710 (12'2") Overall Width mm (ft.in.) 3,100 (10'2") Overall Height mm (ft.in.) 915 (3')	Overall Length mm (ft.in.) 3,800 (12'6") Overall Width mm (ft.in.) 2,850 (9'5") Overall Height mm (ft.in.) 700 (2'4")
ENGINE	Name CAT C7.1 Nominal Output kW(HP)/rpm 186 (252.9) / 2,200 Fuel Capacity ℓ (gal) 300 (79.3) Hydraulic Oil Tank Capacity ℓ (gal) 154 (40.7) DEF Tank Capacity ℓ (gal) 32 (8.5)	Name CAT C7.1 ACERT Nominal Output kW(HP)/rpm 225 (306.2) / 2,200 Fuel Capacity ℓ (gal) 222 (58.7) Hydraulic Oil Tank Capacity ℓ (gal) 177 (46.8) DEF Tank Capacity ℓ (gal) 32 (8.5)	Name CAT C9.3B Nominal Output kW(HP)/rpm 310 (421.5) / 2,200 Fuel Capacity ℓ (gal) 400 (105.7) Hydraulic Oil Tank Capacity ℓ (gal) 195 (51.5) DEF Tank Capacity ℓ (gal) 31.8 (8.4)
EMISSION STANDARD	Tier4 Final EU Stage V	Tier4 Final EU Stage V	Tier4 Final EU Stage V

Specifications are subject to change without notice.

MODEL	MST-600VD	MST-800VD
PERFORMANCE	Maximum Payload kg (lbs) 3,800 (8,378) Loading Capacity (Struck / Heaped) m ³ (yd ³) 2.52 (3.3) / 4.18 (5.5) Speed (High / Low) kph (mph) 10.0 (6.2) / 7.0 (4.3) Ground Pressure (Empty / Laden) kPa (psi) 24.8 (3.6) / 46.4 (6.7)	Maximum Payload kg (lbs) 5,000 (11,023) Loading Capacity (Struck / Heaped) m ³ (yd ³) 1.82 (2.4) / 2.95 (3.9) Speed (High / Low) kph (mph) 9.6 (6.0) / 6.7 (4.2) Ground Pressure (Empty / Laden) kPa (psi) 24.6 (3.6) / 41.7 (6)
MACHINE DIMENSION & WEIGHT	Machine Weight kg (lbs) 4,400 (9,700) Overall Length mm (ft.in.) 3,780 (12'5") Overall Width for transport mm (ft.in.) 1,950 (6'5") Overall Height mm (ft.in.) 2,330 (7'8") Min. Ground Clearance mm (ft.in.) 350 (1'2") Crawler Width mm (ft.in.) 500 (20")	Machine Weight kg (lbs) 6,570 (14,484) Overall Length mm (ft.in.) 4,870 (15'12") Overall Width for transport mm (ft.in.) 2,300 (7'7") Overall Height mm (ft.in.) 2,300 (7'7") Min. Ground Clearance mm (ft.in.) 400 (1'4") Crawler Width mm (ft.in.) 600 (24")
DUMP BED (INNER)	Overall Length mm (ft.in.) 2,150 (7'1") Overall Width mm (ft.in.) 1,700 (5'7") Overall Height mm (ft.in.) 350 (1'3")	Overall Length mm (ft.in.) 3,000 (9'11") Overall Width mm (ft.in.) 2,000 (6'7") Overall Height mm (ft.in.) 300 (1'2")
ENGINE	Name KUBOTA V3307 Nominal Output kW(HP)/rpm 55 (74.2) / 2,200 Fuel Capacity ℓ (gal) 75 (19.8) Hydraulic Oil Tank Capacity ℓ (gal) - DEF Tank Capacity ℓ (gal) -	Name Mitsubishi 4D34 Nominal Output kW(HP)/rpm 81 (110.1) / 2,200 Fuel Capacity ℓ (gal) 130 (34.3) Hydraulic Oil Tank Capacity ℓ (gal) - DEF Tank Capacity ℓ (gal) -
EMISSION STANDARD	Tier4 Interim EU Stage IIIA	Tier2 EU Stage II

MODEL	MST80C	MST110C
PERFORMANCE	Maximum Payload kg (lbs) 8,000 (17,637) Loading Capacity (Struck / Heaped) m ³ (yd ³) 2.52 (3.3) / 4.18 (5.5) Speed (High / Low) kph (mph) 9.7 (6.1) / 6.7 (4.2) Ground Pressure (Empty / Laden) kPa (psi) 25.7 (3.7) / 44.4 (6.4)	Maximum Payload kg (lbs) 11,000 (24,251) Loading Capacity (Struck / Heaped) m ³ (yd ³) 3.42 (4.5) / 5.79 (7.6) Speed (High / Low) kph (mph) 10.5 (6.5) / 7.5 (4.7) Ground Pressure (Empty / Laden) kPa (psi) 33.5 (4.9) / 59.5 (8.6)
MACHINE DIMENSION & WEIGHT	Machine Weight kg (lbs) 11,000 (24,251) Overall Length mm (ft.in.) 5,840 (19'2") Overall Width for transport mm (ft.in.) 2,650 (8'9") Overall Height mm (ft.in.) 2,930 (9'8") Min. Ground Clearance mm (ft.in.) 540 (1'10") Crawler Width mm (ft.in.) 700 (28")	Machine Weight kg (lbs) 14,200 (31,306) Overall Length mm (ft.in.) 6,420 (21'1") Overall Width for transport mm (ft.in.) 2,850 (9'5") Overall Height mm (ft.in.) 3,160 (10'5") Min. Ground Clearance mm (ft.in.) 480 (1'7") Crawler Width mm (ft.in.) 750 (30")
DUMP BED (INNER)	Overall Length mm (ft.in.) 3,100 (10'3") Overall Width mm (ft.in.) 2,440 (8'1") Overall Height mm (ft.in.) 370 (1'3")	Overall Length mm (ft.in.) 3,590 (11'10") Overall Width mm (ft.in.) 2,440 (8'1") Overall Height mm (ft.in.) 390 (1'4")
ENGINE	Name Cummins B6.7 Nominal Output kW(HP)/rpm 168 (228.4) / 2,200 Fuel Capacity ℓ (gal) 251 (66.3) Hydraulic Oil Tank Capacity ℓ (gal) 125 (33) DEF Tank Capacity ℓ (gal) 33.54 (8.9)	Name Cummins B6.7 Nominal Output kW(HP)/rpm 186 (252.9) / 2,200 Fuel Capacity ℓ (gal) 266 (70.3) Hydraulic Oil Tank Capacity ℓ (gal) 125 (33) DEF Tank Capacity ℓ (gal) 33.54 (8.9)
EMISSION STANDARD	Tier4 Final EU Stage V	Tier4 Final EU Stage V

Specifications are subject to change without notice.

Living tradition World No.1 tracked dumper Crawler Carrier Rigid Series

Consideration for the Environment

Auto Deceleration

When idling continues for a certain period of time, engine speed automatically idles down to improve fuel efficiency while reducing noise and CO₂ emissions. (MST80C/MST110C/MST80CR/MST110CR/MST200CR)



MOROOKA Tracked dumpers working in the world.

The pioneer in the field of rough terrain transport, MOROOKA's MST series have gained the #1 market share not only in Japan but also overseas and active all over the world. As a result of our achievement, MST series has earned a high reputation in the used equipment market as well.



Pursuing Safety and Comfort

List of canopy and cabin specification

Supported models		
Name	Canopy	Cabin
MST-600VD	ROPS	-
MST-800VD	Non ROPS	-
MST80C	-	ROPS/FOPS
MST110C	-	ROPS/FOPS
MST40CR	ROPS/FOPS	ROPS/FOPS
MST-1000VDR	-	ROPS/FOPS
MST80CR	-	ROPS/FOPS
MST110CR	-	ROPS/FOPS
MST-3000VDR	-	ROPS
MST200CR	-	ROPS/FOPS

highly customizable for many purposes

Morooka Carriers are customized for a variety of industries. Our carriers can be outfitted with Dump Beds, Digger Derricks, Field Service Equipment, Trimmers, Buckets, Cranes, Welding Equipment, Flat Beds, Drilling Equipment and more. Find out more about how a customized Morooka Carrier can solve your unique project needs.

Although Morooka Carriers are highly customizable for many purposes, Morooka is not responsible nor liable for the injuries or damages incurred with the additional features. Please consult with our distributors first to get the approval.

Aiming for ease of use and safety

RIGID SERIES

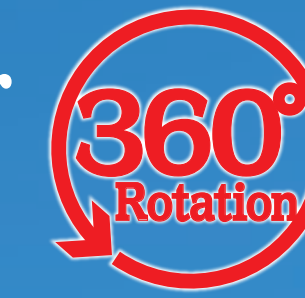
Rigid Series



MST-600VD Max.Payload 3.8t Tier4 Interim / EU Stage IIIA
MST-800VD Max.Payload 4.8t Tier2 / EU Stage II
MST80C Max.Payload 8t Tier4 Final / EU Stage V
MST110C Max.Payload 11t Tier4 Final / EU Stage V

360°Rotating Crawler Carrier "KURU-KURU" Carrier Series

*KURU-KURU means rotating or revolving in Japanese.



"KURU KURU" SERIES

Consideration for the Environment

Surround View Monitor

The use of a surround-view monitor system can enhance safety on-site and for the operators.

*This system is designed to assist operators but is not intended to prevent accidents or collisions.

(MST200CR)



Pursuing Safety and Comfort

For Safe Work

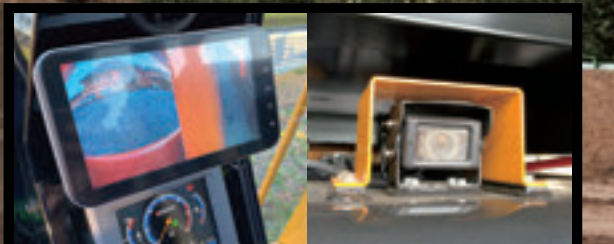
Backup and side cameras have been equipped to alleviate rear and right hand side blind spots. (MST-1000VDR/MST80CR/MST110CR/MST-3000VDR/MST200CR)

360° Full Rotating Upper Structure

The 360° full rotation design dramatically reduces the need of pivot turn and spin turn. It also greatly improves work efficiency and enables operator to unload soil easily in any location.

Improvement of durability in dump bed

Introduction of wear-resistant steel Hardox® greatly improves durability of dump bed and contributes reduction of running cost. (MST80C/MST80CR/MST110C/MST110CR/MST200CR)



"KURU-KURU" Carrier Series



MST40CR Max.Payload 4t Tier4 Final / EU Stage V
MST-1000VDR Max.Payload 5.5t Tier4 Final / EU Stage IV
MST80CR Max.Payload 8t Tier4 Final / EU Stage V
MST110CR Max.Payload 11t Tier4 Final / EU Stage V
MST-3000VDR Max.Payload 15t Tier4 Final / EU Stage V
MST200CR Max.Payload 20t Tier4 Final / EU Stage V