

MOROOKA



Technology and
Environmental protection

GENERAL CATALOGUE



CARRIER

FORWARDER

CRUSHER

SCREEN

FORKLIFT

SHOVEL LOADER

Morooka's world-leading innovation, Rubber tracks, and HST system

Morooka first produced rubber tracks 35 years ago as a joint development with Bridgestone. Rubber tracks are particularly suited for soft, sandy and rough terrain. Our machines allow for smooth and stable driving on various job sites.



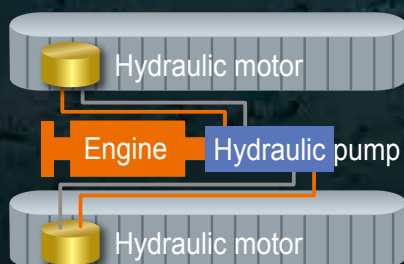
Our rubber tracks received Prize for Science and Technology in 1995.

We manufacture various machines, developed by our highly experienced technology and know-how. We remain committed to meeting expectations of customers throughout the world.



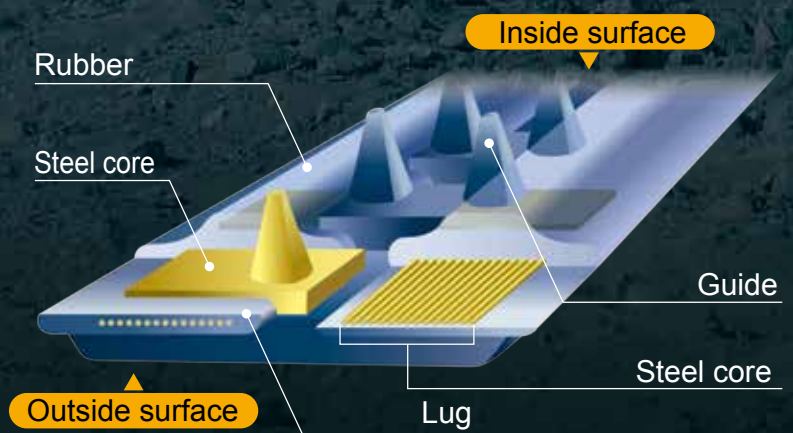
HST SYSTEM

The hydrostatic transmission allows for economical use of the engine's full power. It completely eliminates the need for clutch and gear controls and secures maneuverability.



RUBBER CRAWLER

Rubber crawler inside system





Main Products Introduction

“To open a new frontier where no path has ever existed.”

As a pioneer of rubber tracks combined with HST system, Morooka provides construction, forestry, agriculture and environmental machines around the world through our world-wide distributor network. We always aim to manufacture high quality and high performance products, and our machines continue to contribute to the development of mankind and the earth environment.

Characteristic of our products

- 1** Our endless rubber tracks generate less ground pressure, which leads to faster traveling.
- 2** Simple and compact design. Our machines can be operated by anyone.
- 3** Undercarriage is ship-bottom-shaped and employs a bogie mechanism, which allows to absorb the shocks from the ground and achieve stable running.
- 4** Our undercarriage has no limitation. It is used as a base machine in versatile applications.
- 5** Rubber crawler and HST system provide not only smooth and stable running, also generate larger traction.

CARRIER

Our main product, carriers perform with confidence on rough and soft terrain where wheeled equipments are not able to access.



FORWARDER

Forwarders are known for its performance in forestry industry.



CRUSHER

Crushers turn wood material into fertilizer, fuel chips or recycled material.



SCREEN

Screens allow for more selections of use of wood chips after sorting.



FORKLIFT

Our forklifts are what you need on agricultural land or rough terrain.



SHOVEL LOADER

Our shovel loaders accelerate on rough terrain such as sloping land or snow area.



CARRIER

We take pride in being a pioneer of rubber tracks.



MST-300VD

■ Overall length: 3,150mm Overall width: 1,745mm
 Overall height: 2,330mm ■ Max. payload: 2,500kg
 ■ Nominal output/rpm: 35.6kw/2,800min⁻¹



MST-700VD

■ Overall length: 4,520mm Overall width: 2,225mm
 Overall height: 2,575mm ■ Max. payload: 4,300kg
 ■ Nominal output/rpm: 69.2kw/2,200min⁻¹



MST-2200VD

■ Overall length: 6,260mm Overall width: 2,850mm
 Overall height: 3,170mm ■ Max. payload: 11,000kg
 ■ Nominal output/rpm: 186kw/2,000min⁻¹



MST-300VDR

■ Overall length: 3,490mm Overall width: 1,745mm
 Overall height: 2,330mm ■ Max. payload: 2,500kg
 ■ Nominal output/rpm: 35.6kw/2,800min⁻¹



MST-800VD

■ Overall length: 4,430mm Overall width: 2,425mm
 Overall height: 2,590mm ■ Max. payload: 4,800kg
 ■ Nominal output/rpm: 96.5kw/2,200min⁻¹



MST-2200VDR

■ Overall length: 5,900mm Overall width: 2,980mm
 Overall height: 3,200mm ■ Max. payload: 11,000kg
 ■ Nominal output/rpm: 186.5kw/2,200min⁻¹



MST-600VD

■ Overall length: 3,790mm Overall width: 2,100mm
 Overall height: 2,330mm ■ Max. payload: 3,800kg
 ■ Nominal output/rpm: 54.6kw/2,200min⁻¹



MST-1500VD

■ Overall length: 5,750mm Overall width: 2,650mm
 Overall height: 2,910mm ■ Max. payload: 7,000kg
 ■ Nominal output/rpm: 168kw/2,200min⁻¹



MST-3000VD

■ Overall length: 6,200mm Overall width: 3,000mm
 Overall height: 3,150mm ■ Max. payload: 15,000kg
 ■ Nominal output/rpm: 242kw/2,200min⁻¹

Morooka's carriers are used all over the world



Residential land development



Research of archaeology sites



Crane equipped



Transportation of supplies



Infrastructure improvement

SPECIAL EQUIPMENT



Drilling



Tunnel spraying



Access platform



Soil improvement



Pruning



Fertilizer



Drilling



Mixer



United Nations



Ministry of Defense



Antarctic continent survey

※Please consult with us before you apply any modification.

FORWARDER

Strongest partner on your forestry jobsite.



MST-300VDL

■ Overall length: 4,205mm Overall width: 1,740mm
Overall height: 2,330mm ■ Max. payload: 2,800kg
■ Nominal output/rpm: 35.6kw/2,800min⁻¹



MST-650VDL

■ Overall length: 5,100mm Overall width: 2,060mm
Overall height: 2,240mm ■ Max. payload: 4,000kg
■ Nominal output/rpm: 68.6kw/2,100min⁻¹



MST-1500VDL

■ Overall length: 6,500mm Overall width: 2,660mm
Overall height: 2,900mm ■ Max. payload: 7,000kg
■ Nominal output/rpm: 145w/2,100min⁻¹



MST-600VDL

■ Overall length: 4,690mm Overall width: 2,100mm
Overall height: 2,270mm ■ Max. payload: 3,800kg
■ Nominal output/rpm: 54.6kw/2,200min⁻¹



MST-800VDL

■ Overall length: 5,070mm Overall width: 2,300mm
Overall height: 2,300mm ■ Max. payload: 4,800kg
■ Nominal output/rpm: 92.8kw/2,200min⁻¹



MST-2200VD <Logging specification>

■ Overall length: 6,500mm Overall width: 3,010mm
Overall height: 3,050mm ■ Max. payload: 11,000kg
■ Nominal output/rpm: 186.5kw/2,200min⁻¹

Tough undercarriage and strong traveling performance

STANDARD SPECIFICATION

Forwarders are exclusively designed for forestry.
Low ground pressure minimizes damage to delicate forest road surface.



MST-2200VD



MST-800VDL

OPTION

We have variety of options, such as high-performing grapples such as HIAB, cranab and UNIC, Nansei winches, and compressing vessel for biomass use.



MST-800VDL
Grapple and compressing vessel



MST-800VDL
Compressing vessel



MST-800VDL

Grapple operating specification
Driving and grapple operation both can be done from the canopy.



Compressing vessel maximize operating efficiency.



MST-600VDL
HIAB



MST-800VDL
HIAB/Nansei Winch



MST-1500VDL
Cranab/Nansei Winch

CRUSHER

Save limited resources

Morooka crusher contributes to effective biomass reuse by processing wood material such as forestry residues and urban wood waste.



MC-1500

- Overall length: 4,600mm Overall width: 2,110mm Overall height: 2,470mm
- Tub opening diameter: 1,500mm
- Nominal output/rpm: 107kw/2,000min⁻¹



MC-4000

- Overall length: 5,900mm Overall width: 2,720mm Overall height: 2,840mm
- Tub opening diameter: 2,000mm
- Nominal output/rpm: 354kw/2,000min⁻¹



MC-2000

- Overall length: 5,120mm Overall width: 2,400mm Overall height: 2,730mm
- Tub opening diameter: 1,800mm
- Nominal output/rpm: 145kw/2,100min⁻¹



MC-6000

- Overall length: 5,900mm Overall width: 2,950mm Overall height: 3,080mm
- Tub opening diameter: 2,200mm
- Nominal output/rpm: 470kw/2,100min⁻¹

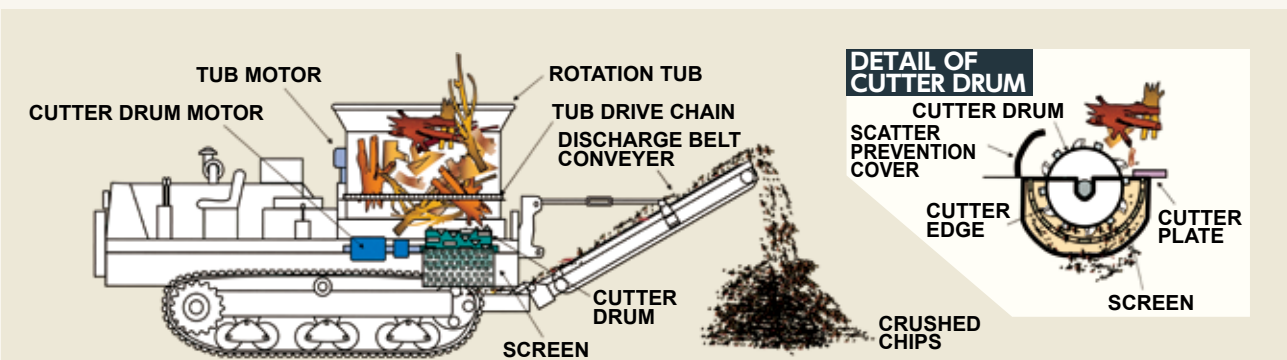


Simple, economical and compact



MECHANISM OF MOROOKA CRUSHER

- ① Tub rotates to send supplied material down to cutter drum.
- ② Crush supplied material with cutter drum and cutter plate.
- ③ Crushed material goes through screen onto conveyer.



SIMPLE & SAFETY



Cutter Blades and Cutter Plate

Cutter blades are super-hard, made of tungsten carbide mixed with artificial diamond. Each cutter blade can be used twice by switching upside down. Cutter plate can be replaced 4 times, up and down, front and back.

Tub

Tub can be opened up to 90 degrees at most, which secures easy maintenance. Tub opening is so wide, it will get your job done fast.

Cleaning up and Maintenance

Tub dumps open so cleaning and maintenance are easy. Oil cooler and radiator also open up.

Variety of Options

Magnetic separator, screen, extension of belt conveyer and tub automatic reversal function.

CRUSHER

Stationary Wood Crusher

Contribution to Global Environment



Stationary wood crusher enables to achieve cost-effectiveness with crushing ability of MC-2000



MC-2500T

- Overall length: 4,500mm Overall width: 2,400mm
- Overall height: 2,730mm ■ Tub opening diameter: 1,800mm
- Nominal output/rpm: 140kw/2,200min⁻¹(190PS)

Hammer type cutter drum



Knife type cutter drum



2 types of cutter drums

On MC-2500T, conventional hammer type cutter drum can be installed and we also have knife type cutter drum as an option. Knife type cutter drum provides superior crushing capacity.

CRUSHER Knife type cutter drum



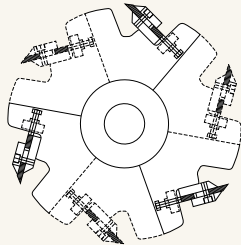
Excellent and superior crushing capacity

Knife type cutter drum enables to achieve greater crushing capacity and efficient wood chip production.



Knife type cutter drum

- ◆ 9~15 blades according to machine size.
- ◆ Knife type blades have excellent sharpness. When worn out, they can be sharpened again and reused dozens of times.
- Blades last approximately for 10 hours at a time. Endurance period may vary according to crushing material and content rate of sand, soil or metal.
- We have an automatic knife-shaepener for sale.



ACCELERATING BIOMASS ENERGY USE ■ ENVIRONMENTAL PROTECTION



SCREEN



MRS-24

- Overall length: 4,700mm Overall width: 2,350mm Overall height: 2,520mm
- Sieve area: 1,200mm×2,400mm
- Nominal output/rpm: 35.6kw/2,800min⁻¹
- Compatible models: MC-1500·MC-2000



MRS-36

- Overall length: 6,080mm Overall width: 2,670mm Overall height: 2,705mm
- Sieve area: 1,700mm×3,680mm
- Nominal output/rpm: 54.6kw/2,200min⁻¹
- Compatible models: MC-4000·MC-6000



Screen Size

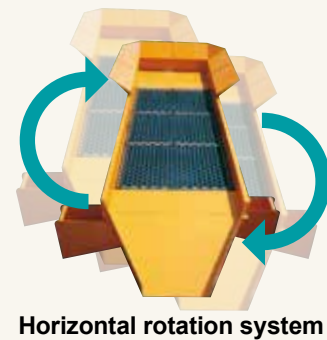
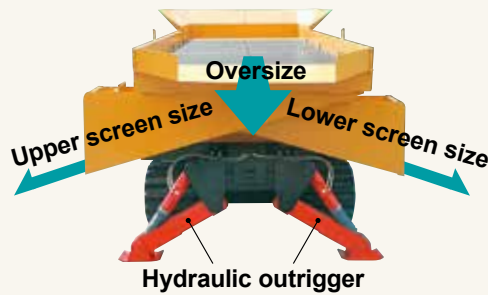
- Standard (Up) 40mmφ (Under) 10mmφ
- Optional 15mmφ, 20mmφ, 30mmφ, 50mmφ

MRS series ensure perfect separation of supplied material. Self-traveling undercarriage enables to get your job done anywhere.



FEATURE

- ◆ Rotary type
- ◆ Two layered screens separate material in three size.
- ◆ Horizontal rotation system.
- ◆ Hydraulic outrigger.



ENVIRONMENTAL PROTECTION



FORKLIFT

Our forklifts work where wheeled-type forklifts cannot access.



Lifting laying iron plate



Working on farm field



Showa station (Antarctica)

MF-25V

- Overall length: 3,880mm Overall width: 1,590mm
- Overall height: 2,170mm ■ Max. payload: 2,500kg
- Nominal output/rpm: 34.1kw/2,800min⁻¹



Strong undercarriage

Morooka's rubber crawler forklift shows its strength on rough terrain such as farm field, construction and earthmoving jobsite.

SHOVEL LOADER

Best machine for snow removal or agricultural use.



Construction work



Snow removal on Skiing field



Transport of fertilizer

MS-40V

- Overall length: 3,750mm Overall width: 1,850mm
- Overall height: 1,210mm ■ Bucket capacity: 0.4m³
- Nominal output/rpm: 33.8kw/2,800min⁻¹



Strong undercarriage

Morooka's rubber crawler shovel loader shows its strength on rough terrain such as snowy area, construction and earthmoving jobsite.

Corporate History



March 1958	Established as a construction company
Nov. 1966	Established as Morooka Industry Ltd.
Aug. 1971	Company name changed to Morooka Co., Ltd.
Aug. 1975	Production start of hydraulic trencher, bulldozer and off-road carrier
Oct. 1977	Start of delivery of crawler shovels and crawler carriers to Showa base (Antarctica)
Oct. 1978	Development of large size crawlers (500mm width), followed by release of MST-500, as a joint development with Bridgestone
May 1986	Start of OEM supply to Komatsu
Oct. 1988	Establishment of first branch office (Chugoku office)
March 1989	Release of MST-2200
April 1989	Start of OEM supply to Hitachi
May 1990	Establishment of Tomakomai factory (Hokkaido)
Sep. 1990	Release of farm tractor
Oct. 1990	Start of delivery of carrier to Ministry of Defense
April 1993	Establishment of Kumamoto factory (Kyushu)
Oct. 1994	Establishment of Tohoku branch office
April 2000	Release of Wood Crusher
March 2003	Establishment of Morooka U.S.A.
March 2003	Establishment of Hokushinetsu office
May 2005	Relocation of the head office and factory to Ryugasaki
July 2007	Completion of main factory
April 2008	50th anniversary
June 2008	Establishment of Kyushu office
July 2009	Establishment of Chubu office
Feb. 2011	Start of delivery of Wood Crusher to Ministry of Defense
July 2011	Establishment of development center
July 2012	Start of production in America
Sep. 2012	ISO 14001
Jan. 2015	Establishment of Miho factory
Aug. 2015	ISO 9001

Morooka's worldwide Sales network



MOROOKA — Living with Environmental



Morooka Co., Ltd.

Postal Code : 301-0031

358 Shoubeeshindenmachi, Ryugasaki city, Ibaraki Prefecture, Japan

TEL, +81-297-66-2111 FAX, +81-297-66-3110

URL : www.morooka.co.jp (Japanese)

www.morooka.com (English)